



NEWPORT RUGBY CLUB



CHALLENGE TROPHY

SPAIN

SAT. 10th JANUARY 1998

Kick-off 2.30 p.m.

OFFICIAL PROGRAMME

£1

MAIN SPONSOR

**ROBERT
PRICE**

BUILDERS' MERCHANTS



 **The Royal Bank
of Scotland plc**

Newport Branch



Gerry Jones Transport Services Ltd

National - International Hauliers

SOUTH BLACKVEIN INDUSTRIAL ESTATE, ISLWYN ROAD, CROSS KEYS, NP1 7PX
Telephone (01495) 271212 & 271060. Fax: (01495) 272190

TRANSPORT • WAREHOUSING • DISTRIBUTION

U.K DAILY
CONTINENTAL TRAFFIC
EXPRESS DELIVERIES
DISTRIBUTION FACILITIES
12,000 SQ.FT. WAREHOUSING
1 TON TO 24 TONS

**Supporters of
NEWPORT R.F.C.**



Gerry Jones Transport Services Ltd

National - International Hauliers



NEWPORT RUGBY CLUB

Tel: 01633 670690

Officers 1997/98

Fax: 01633 670696

President : Martyn Hazell
Chairman : David Watkins
Honorary Secretary : Christopher Hill
Club Captain : Ian Jones

Vice Chairman
Robert Atkins

Hon. Treasurer
Geoff Evans

Fixture Secretary
Robert Atkins

Youth Development: Tim Cornwall

Rugby Executive Committee
Brian Cresswell, Geoff Evans, Kevin Fisher, Christopher Hill,
David Watkins, Stuart Watkins.

Rugby Committee Members
Robert Atkins, Ian Barnard, Jim Brunnock, Roger Clifford, Ron Davies,
Hywel Lewis, Rhys Morgan, Allan Sanderson.

Team Management

Club Coaches: Steve Jones, Steve Fenwick **United Coaches:** Nigel Callard, Rhys Morgan
Performance Adviser: Jeremy Moody **Team Administrator:** Phil Ward

Team Manager: Jim McCreedy

Medical Officers

Club Doctors
Lindsay Roblings
Robert Davies
David John

Club Surgeons
D. Greg Jones
Philip Alderman
Eric Sturdy

Club Dentist
Roger Thwaites

Physiotherapists
Noel Godfrey
Mike Delahay

Programme Editor: Roger Panting

WE SERVICE ALL MAKES OF CARS

L. C. MOTORS



FAST FIT WHILE-U-WAIT SERVICE

*If Your Car Needs A Long Stay
We Offer Self Drive Care Hire
At Exceptional Rates*

LOAN CAR FACILITIES

**FIXED PRICE QUOTE
SYSTEM**

**COMPLETE BACK-UP
SERVICE**



SERVICE • REPAIR • PARTS

**We Offer Total Customer Care And Are Committed
To Putting Our Customers First.**



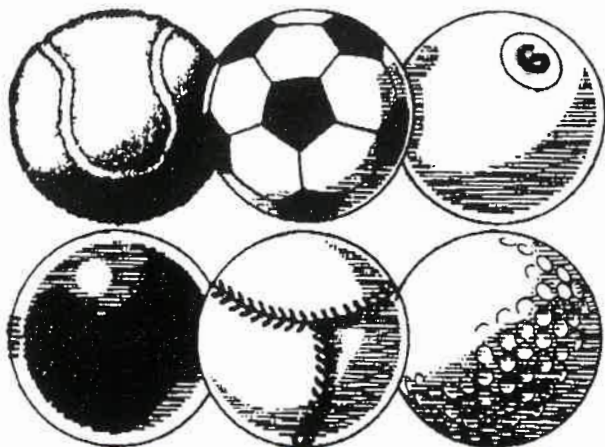
NEWPORT
(01633) 259892
121 CORPORATION ROAD
NEWPORT



Alfa Romeo

CWMBRAN
(01633) 876411
CHAPEL STREET
PONTNEWYDD, CWMBRAN

<http://www.Newport-rfc.co.uk>



**Pleased to
support your sport**

TSB General Insurance & **TSB** PhoneBank

TSB We want you
to say **YES**

TSB General Insurance & TSB PhoneBank · Tredegar Park · Newport · South Wales NP1 9SB

<http://www.Newport-rfc.co.uk>

PAUL & CHRIS SMITH
at the



*Support Newport RFC
and Welcome Supporters*

for a Drink

B & B AVAILABLE

(01633) 267571



ROUGEMONT SCHOOL

Newport's only all-age independent school

- *SMALL CLASSES*
- *EXCELLENT ACADEMIC RESULTS*
- *A WIDE RANGE OF EXTRA-CURRICULAR ACTIVITIES*

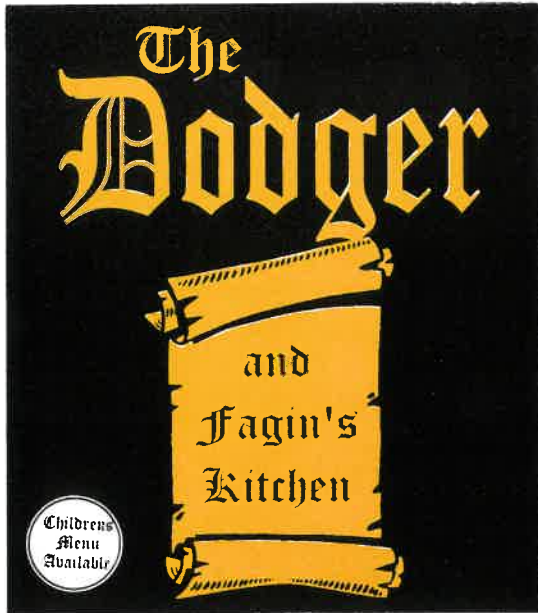
LLANTARNAM HALL

Our new site with over 50 acres of grounds is now open for the age range 7-18.
Why not pay us a visit to see this marvellous hall on one of the most
impressive school sites in Wales.

Telephone 01633 855560

for an appointment or write to:

The Admission Secretary, Rougemont School, Llantarnam Hall,
Malpas Road, Newport, Gwent NP9 6QB.



*Also features
10-Pin Bowling
Pool, Darts . . .
and
Much More!*

JOIN US BEFORE AND AFTER THIS GAME

*Homemade Specials, Snacks and Meals
Available All Day*

*We also stock an extensive range
of Beers and Lagers*

OPEN FROM: 11.00am to 11.00pm (Mon-Sat)
12.00 noon to 3.00pm & 7.00-10.30pm (Sun)

*All this is just a short walk
from the Rugby Ground*

**6 CHEPSTOW ROAD · NEWPORT · GWENT
TELEPHONE: 01633 212910**

<http://www.Newport-rfc.co.uk>

EDITORIAL . . . by Roger Panting

Will a turn in the year see a change in Newport's fortunes? Certainly the gods weren't with the club for the best part of 1997. Bridgend, Ebbw Vale and Cardiff were all games carelessly tossed away, and the final experience of 1997 saw a 22-10 lead at The Gnoll turned into a 1-point defeat. In the first half the Neath supporters were as quiet as mice as for once Newport took all their chances to build up a healthy lead. When Newport's former outside half Chris John gift-wrapped a belated Christmas present to his former colleagues by kicking the ball straight to wing Matthew Robinson, who took his chance splendidly, the game looked over, but from that moment on Newport gave the impression of a side not being accustomed to being ahead and hence stood back to allow Neath into the game. Lack of discipline saw yellow cards for Gareth Taylor, Rod Snow and Sven Cronk, and a red one for Ian Gough from referee Peter Bolland, a former Newport player. Gough's indiscretion was the last throw of the dice for it allowed Chris John the last laugh on his former team mates by kicking a match-winning 30-yard goal. Shaun Connor had difficult chances to win the game for Newport but he was unsuccessful and was somewhat surprisingly made the scapegoat for Newport's morale-sapping defeat by being omitted from the selected side for the subsequently postponed encounter at Bridgend. True, he has not been at his best of late but it is only a month ago since he was nearly the hero of the hour by scoring 20 points against Cardiff and, furthermore, he did run 80 yards to score at Neath to set Newport's wheels in motion. His replacement, Alex Lawson, had a splendid game at Neath at full back, courageously fielding the high ball and making Martyn Llewellyn's try, but Premier League matches and casual jaunts against the likes of Pwllheli are a vastly different proposition. Connor is only young and promising, and one can hope that his confidence will be restored to enable him to regain his rightful place in the side.

Newport's performance at Neath can be put in perspective in that the following week Neath demolished Llanelli 31-6. What a turn around from the first Saturday of the season when a dismal Neath were defeated 52-23 at Stradey Park. However, the four points Neath collected from last Saturday's win ensures that Bridgend and Newport are now the only contenders for the sole relegation spot. Newport must win the re-arranged game at The Brewery Field to stand any chance, but were they to do so then the relegation tussle between the clubs is not likely to be resolved until the last game of the season on 16th May when Newport entertain Neath and Ebbw Vale are at home to Bridgend. In the short term it does not get any easier for Newport because

their next scheduled league fixtures are against leaders Swansea and then reigning champions Pontypridd at Sardis Road.

Mention has been made in certain sources that relegation would not be the end of the world for Newport and a spell in the First Division would give them a chance to regroup. This is complete nonsense, for the repercussions of relegation would be endless . . . no European competition next season, no fixtures against the leading sides unless favourable cup draws, less money from the W.R.U. Players would leave if their contracts could be bought up, for a season in the First Division would serve no purpose for the likes of Machacek, Gough and Matthew Watkins. Crowds would dwindle, sponsors would be reluctant to invest their money and for the diehard supporters visits to the likes of Bonymaen and Merthyr are not for the faint-hearted when one can travel fourteen miles and watch Cardiff v Brive. Newport are quite likely to gain promotion in their first season but by then the damage may have already been done because once you are down among the deadmen past experience has shown that it is a terribly difficult task to regain one's footing and not become a yo-yo club (i.e. up one minute down the next). Aberavon are the best example, whilst Newbridge and Pontypool are perfect illustrations of once proud clubs struggling for victories and fans. Caerphilly are likely to be promoted this season, but who would bet against them being relegated next season. Newport are not, however, without hope for with a fair rub of the green victory over Bridgend should be achieved and points could be collected against Ebbw Vale and Neath at Rodney Parade. There is still one final option . . . the W.R.U. could review its decision to have only eight clubs in the Premier League. This season has proved that clubs are not interested in meaningless competitions like today's Challenge Trophy and as the English Clubs are unlikely to assist the Welsh the only option would seem to be to increase the league. A Celtic Cup has been mooted with the likes of Munster and Glasgow joining the Welsh sides in a new competition, but that is unlikely to find favour with the leading Welsh clubs, as once again it would be no crowd puller.

Finally, in case any of you are wondering whatever happened to our former star centre John Colderley, who last season was moving up the Welsh rankings, the answer is that having joined Moseley in July he suffered a serious neck injury two weeks after he arrived at The Reddings. He was only recently given the all-clear to resume playing and was selected to make his debut against Sale in last week's Tetley Bitter Cup-tie but, unfortunately, failed to do so due to it being postponed.

TIGERS TAMED . . .



Whiling away the summer months, I noticed an article in a financial paper indicating Leicester R.F.C. would shortly be going public and issuing shares to its season ticket holders. It seemed a reasonable investment and hence, with a suitable cheque deposited to the club, I became a Tigers Season Ticket holder. The booklet contains a ticket for each Courage League fixture, so a Christmas holiday break gave one an opportunity to visit Welford Road to witness the Leicester v Newcastle clash, a game which would surely decide the outcome of the English League title.

Plan A, for the better half and myself, was to arrive early in the vicinity of the ground, enjoy a meal and sample the expectant atmosphere. Our cause was not assisted by the fact that at 6.00pm we were travelling in the wrong direction along the M1. For future reference, if you join the M1 by courtesy of the M45 you can only proceed in a southerly direction. This meant a detour of some 30 miles and at one stage we were nearer Franklin Gardens in Northampton than Leicester . . . and I couldn't even blame my companion as I was supposed to be navigating!

On eventually arriving in Leicester the ground is situated in the middle of a complex nexus of roads which made parking a nightmare. However, an hour to kick off would still give us a chance to eat, but on entering two suitable pubs equipped with kitchens we were met by a sea of people bedecked in green, red and white attire, most of it having some sort of tiger motif. I've seen fewer tigers on a David Attenborough Special on the Plains of the Serengetty. No chance of any culinary exploits in these establishments for at least two hours, so relegated to the local Safeways Superstore for a rapidly deposited fish and chips — but even the supermarket wasn't safe from tiger uniforms.



NEIL BACK



LORISALE SEREVI

The Welford Road takes some beating on nights like this. A capacity crowd of 17,000 (16,900 of whom are rooting for the Tigers). The fellow next to me has it right, he's brought a pair of binoculars as we're a long way away from the action. It's hard to tell Leicester flanker Neil Back from linesman Steve Lander (at least that's what Back said when he pushed Lander in the Leicester v Bath Cup Final). When Lander's name was announced over the Tannoy on the night the Leicester faithful left him in no doubt as to what they thought of him. Newcastle entered the fray seemingly without a supporter in the house. They must be the most poorly supported Geordie side I'd ever seen for I'm accustomed to seeing 20,000 travelling pot-bellied drunks with *Shearer* emblazoned on their shirts, singing *The Blydon Races*. Even their Speedway team must have more fans than this. However, the game was an education with a truly international flavour. One didn't have the Neil Jenkins v Arwel



JOEL STRANSKY



ROB ANDREW

Thomas insular rivalry but had World Cup hero Stransky v ageing master Andrew, Fijian maestro Serevi against Scottish nugget Gary Armstrong, and the player of the match, Samoan Pat Lam, against local hero Neil Back. Newcastle, the team that Rob built, illustrated that money will buy you most things, in this case almost certainly the league title and silencing the Tigers on the night, scoring three tries to one. The scoreboard regularly exhorted the Leicester fans to "MAKE MORE NOISE" but by the end the home supporters were strangely muted and even the mascot — surprise, surprise, a huge Tiger — had become inanimate, a far cry from the first half when he appeared to be a late entry for the Latin American section of *Come Dancing*. In the face of the odds, one had to hand it to the likes of Rob Andrew, Nick Popplewell and Alan Tait . . . they've done it all, but on the night their professionalism and will power saw them to a famous victory in the cauldron of noise.

The whole occasion was a marvellous spectacle... the match programme and Allied Dunbar Premiership update comprised 84 pages, which I am still reading, the club shop containing every tiger theme you may care to mention, from ladies underwear to glove puppets in the shape of tigers.



MARTIN JOHNSON

Mapping my way carefully home I concluded that what I had witnessed was light years away from the best of Welsh Rugby. The professionalism of the Leicester club was a joy to behold, but on the down side not much of a celebration for Martin Johnson, O.B.E., or a boost for my newly arrived shares, as a Leicester championship would surely have been a boost to their value.



LEAGUE TABLE

	P	W	D	L	F	A	Pts
SWANSEA	7	5	1	1	252	129	21
PONTYPRIDD.....	7	4	2	1	217	121	19
CARDIFF.....	7	4	1	2	194	161	15
LLANELLI.....	8	4	0	4	197	188	14
EBBW VALE.....	7	4	0	3	150	201	14
NEATH.....	8	3	1	4	192	216	12
BRIDGEND.....	7	2	1	4	137	261	7
NEWPORT.....	7	0	0	7	134	196	2

Match Mascot . . .
 for SPAIN game
 Saturday, 10th January 1998

Name KELLY BEVISTER

Age 9 years

School St. Andrews
 Junior School

Favourite Player . . . Jan Machacek



QUIZ No. 12

1. Who holds the British Lions record for most points in one Tour match?
2. Who two players have scored 6 tries for the Lions in one match?
3. Who is the British Lions youngest Test Cap?
4. Who is the British Lions oldest Test Cap?
5. Who holds the British Lions record for most points on one Tour?
6. Who scored 18 points for the Lions against South Africa at Capetown in 1980?
7. Which Welshmen scored two tries for the Lions against NZ at Dunedin in 1959?
8. In 31 Test Matches against NZ how many have the Lions won?
9. Who scored 16 points for the Lions against Australia at Brisbane in 1950?
10. Which forward scored 2 tries for the Lions against Northern Free State on 1st July 1997?

(ANSWERS TO BE FOUND ON PAGE 18)

NEWPORT RUGBY SUPPORTERS CLUB . . .

COACH TRIPS . . .

Date	Venue	Adult	OAP/Child	Depart	Return
24 JAN	SOUTH WALES POLICE	£5.50	£4.50	12 noon	5.30pm
14 FEB	PONTYPRIDD.....	£5.00	£3.50	12 noon	5.30pm

Bookings can be made in the Rodney Hall after each home game, or ring Dave on 282177. Telephone bookings must be made by WEDNESDAY.

MESSAGES . . . There could not be more ardent supporters anywhere than the people on this committee. It's very difficult to remain upbeat with our side having a disastrous season so far, and the W.R.U. has made it a lot worse with the format for the season.

We were inundated with five bookings for the Bridgend game — five people only wanted to use the coach for possibly the most important game in recent history. What is happening? Are Newport RFC unlucky? Are we just not good enough in certain positions? Ask Neath!

Welcome to our visitors from Spain — I hope your reception is a hot one.



NEATH

PAUL WILLIAMS

STAKIS NEWPORT HOTEL

TEL: 01633 413737 FAX: 01633 413713

Our clients tell us we offer the most easily accessible venue in South Wales where junction 24 of the M4 meets the A449 and A48

For residential conferences and day meetings, our luxurious hotel combines quality service and hospitality with first class standards of comfort and facilities throughout.

- Six fully air conditioned recently refurbished conference rooms with "Assured Meetings" standards and excellent value delegate packages available
- 149 beautiful and luxuriously appointed bedrooms which are 30% larger than the UK average with king size beds throughout
- Our stylish Seasons Restaurant offers varied and excellent a la carte and table d'hote menus, not forgetting Sunday Brunch
- Relax and enjoy the Hotel's extensive "Livingwell" health facilities
- Ideal as a business base with Cardiff City Centre only 15 minutes drive
- Ample free security car parking facilities
- Extensive new Conference Centre opening late spring 1998, with conference facilities for up to 330 delegates

*Whatever the occasion,
to find out more . . .
contact Stephen Minns or Sharron Thomas on
01633 413737 (quoting Ref RFC 1)*

NEWPORT R.F.C. BALL SPONSORS



LLOYDS BRITISH

THE SPORTS BOOKSHOP
CARDIFF

LLOYDS BRITISH
ROYAL BANK
OF SCOTLAND

CHAIRMEN STILL

THE SPORTS BOOKSHOP
CARDIFF




CARLSBERG



PLAYER OF THE MONTH

**WE WANT YOUR VOTE
FOR PLAYER OF THE MONTH COMPETITION**

EVERYONE NOMINATING THE WINNING PLAYER WILL
QUALIFY FOR A DRAW FOR A CASE OF
CARLSBERG LAGER

*Presentation to the winner for January will be made in the Clubhouse
after the game against Coventry on 6th February.*

NOMINATION FORMS ARE AVAILABLE AT THE SOUVENIR SHOP
COURTESY OF NEWPORT SUPPORTERS CLUB

— QUIZ ANSWERS —

6. Tony Ward
7. Malcolm Price
8. Six
9. Lewis Jones
10. Simon Shaw

1. Alan Old
2. J.J. Williams & David Duckham
3. Tony O'Reilly
4. Willie John McBride
5. Barry John

£10 off your next
rental
with this programme

Tel: 01633 281 810

Contact Europcar on the above number for Terms and Conditions.

Europcar

YOU RENT A LOT MORE THAN A CAR.

ASD

John Williams Steel

National STRENGTH - Local SERVICE

- WIDE PRODUCT RANGE
- EXTENSIVE STEEL STOCKS
- QUALITY STEEL AND PROCESSING
- PROFILING/GRINDING
- SERVICING THE NEEDS OF INDUSTRY

JOIN THE WINNING TEAM . . .

ASD JOHN WILLIAMS GENERAL STEELS

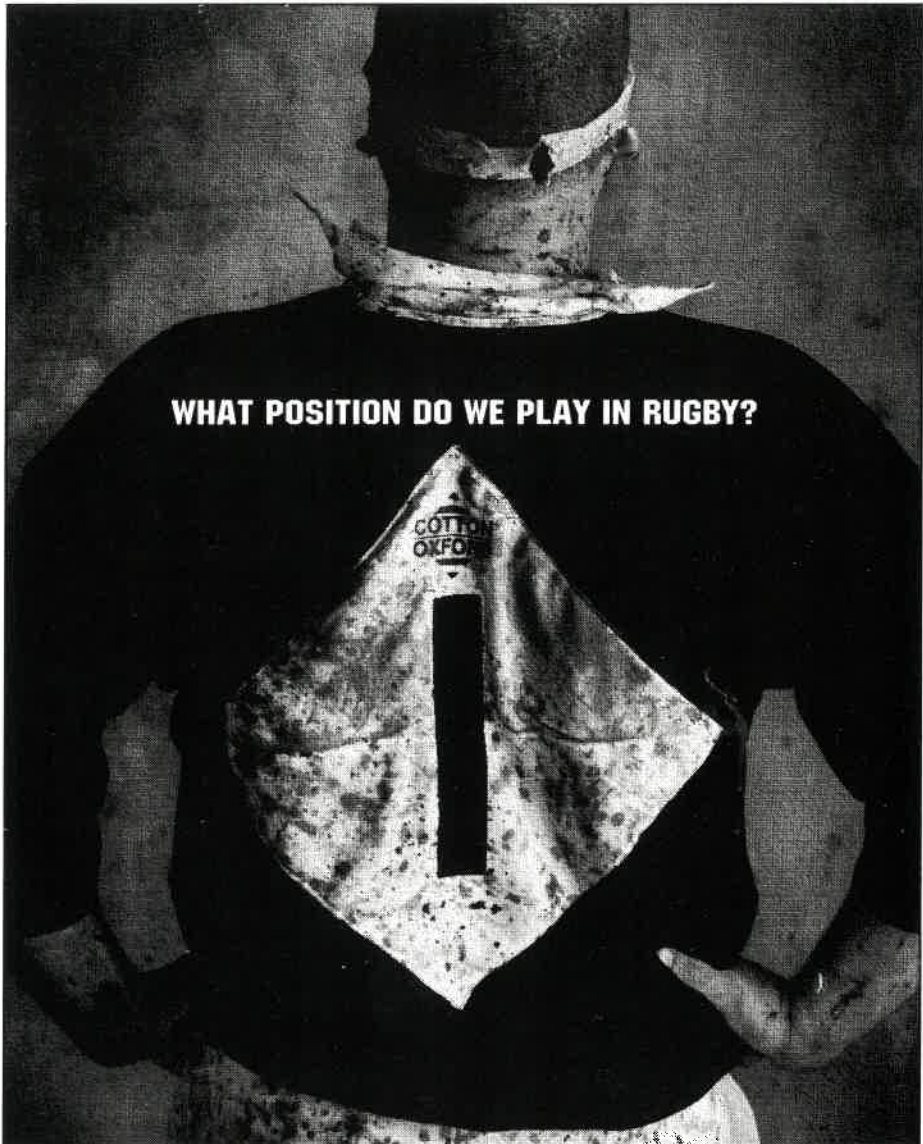
and

ASD JOHN WILLIAMS PROFILES

East Moors Road • Cardiff CF1 5SP

Tel: 01222 460622 • Fax: 01222 490105

<http://www.Newport-rfc.co.uk>



WHAT POSITION DO WE PLAY IN RUGBY?

We're behind more clubs than any other brand in the UK. To see the most dominant force in rugby run down to the club shop right now. There you'll find your club's replica shirts and a full range of training gear and leisure wear. Don't be a spectator, give them a try.

COTTON OXFORD

THE VERY FABRIC OF RUGBY.

COTTON OXFORD ARE SHIRT SPONSORS OF: Bath • Gloucester • London Irish • Sale • Saracens
Wasps • London Scottish • London Welsh • Nottingham • Oxford University • Waterloo • Ebbw Vale
Newport • Swansea • Lansdowne • Young Munster • Boroughmuir • Stirling County • Watsonians
Brive • Barbarians • Canada

<http://www.Newport-rfc.co.uk>



EURO COMMERCIALS

**MERCEDES BENZ
TRUCKS and VANS**

THERE'S NO SUBSTITUTE FOR QUALITY

ALL MAKES
COMMERCIAL VEHICLE SERVICING

LUCAS KIENZLE
TACHOGRAPH STATION

FIND US AT
MALPAS ROAD, NEWPORT
(adjacent to M4 at Junction 26)

Tel: (01633) 821721

Fax: (01633) 822821

also at:

Cardiff (01222) 486070

Bridgend (01656) 723279

Swansea (01792) 700300

DOUG BOWKETT

**RUGBY ROAD GARAGE
NEWPORT · GWENT
NP9 0BS**

**Telephone:
(01633) 841079**



*MOT Testing Station
Petrol & Diesel
Motor Car Servicing and Repairs
Recellulosing & Insurance Damage
Welding & Chassis Repairs
Sun Tuning
Servicing of Prestige Vehicles*

*Chez
& Giovanni
Restaurant*

**TO ALL MEMBERS OF
NEWPORT R.F.C.**

10% Discount available
to all members on production
of their membership

*Outside Specialist Caterers
for Wedding Receptions,
Parties & all Social Occasions*

**52 CLARENCE PLACE
NEWPORT**

Tel: (01633) 259003

WANTED

YOUR SURPLUS BEARINGS

**CHAIN SPROCKETS
OIL SEALS & PULLEYS
TRANSMISSION BELTS**

**County Industrial Supplies Ltd
County House, Chapel Street
Pontnewydd, Cwmbran
Gwent NP44 1DL**

Tel: (01633) 872226

Fax: (01633) 864922

**IMMEDIATE
CASH
FOR
SMALL
OR
LARGE
QUANTITIES**



**GLASS CUT TO SIZE
WHILE YOU WAIT**

AACME GLASS LTD.

GLAZING CONTRACTORS



**24 HOUR
EMERGENCY
CALL OUT
SERVICE**

**FOR HOUSES, SCHOOLS
AND ALL PREMISES**

**FOR FAST & FRIENDLY SERVICE
CALL US FREE - ANYTIME**

**0800 387361
TEL: 01633 244926
FAX: 01633 662097**

71 CORPORATION RD, NEWPORT, GWENT

CALL LINE

0891

660224

**EVERY CALL MADE
BENEFITS THE CLUB**



**In addition
why not visit our
WEB SITE:**

<http://www.Newport-rfc.co.uk>

NEWPORT TOOL HIRE



456 CORPORATION ROAD
NEWPORT, GWENT
Tel 211565 262569

**OPEN 10 HOURS A DAY
MONDAY - FRIDAY**
(half-day Sat/Sun and Bank Holidays)

HIRE ...

- Shampoos
- Breakers
- Mixers
- Ladders
- Towers
- Patio Cutters & Cleaners

THE LOCAL GAS COMPANY
WVG
WEST WALES GAS
BULK & CYLINDER
GAS

... AND LOTS MORE

**WE DON'T HIRE CHEAP EQUIPMENT
WE HIRE EQUIPMENT CHEAP**

AFC OFFICE SYSTEMS



**SALES • SUPPORT • REPAIRS
MAINTENANCE**

Data cabling, full on site maintenance,
Novell Unix Peer to Peer LAN Networks,
SAGE and Multisoft Accounts, DOS and
WINDOWS support.

101 THE MEADOWS
MARSHFIELD · CARDIFF

Telephone:

01633 681166 (Business)

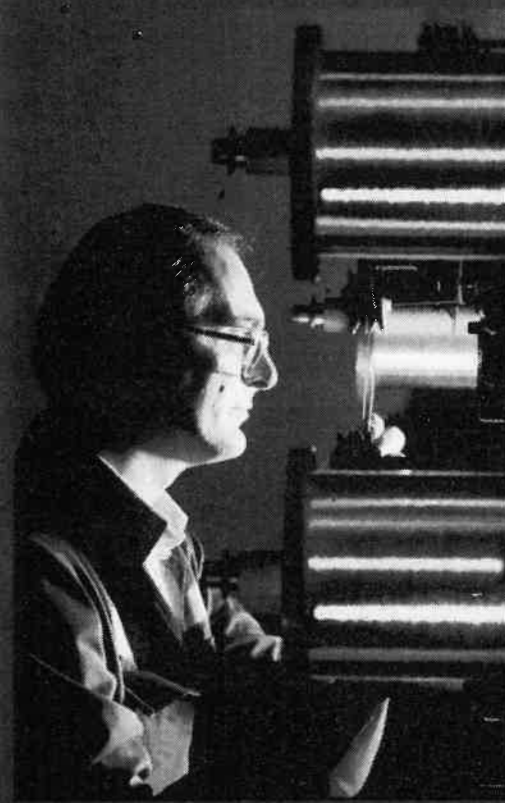
0468 638905 (Mobile)



Probably the best lager in the world.

<http://www.Newport-rfc.co.uk>

Temco



HIGH QUALITY

We have BS EN ISO 9002 and CAA Approvals, and are dedicated to total quality.

HIGH STANDARDS

Our constant programme of R&D ensures that all our clients receive a quality of product which has reached the height of perfection.

HIGH PERFORMANCE

We supply specialist wires for high Performance Cables, Electronic Components, Heating Elements, Computers and Heart Pacemaker Systems.

OUR PRODUCT RANGE INCLUDES:

Copper and high strength Copper Alloys, electroplated with Silver, Nickel or Tin, a wide range of Nickel Chrome and Copper Nickel resistance Alloys. Beryllium Copper, Stainless Steel, Pure Silver and other speciality wire all supplied in either single end, stranded and multi-end configurations.

We pay personal attention to quality.



Temco Ltd, Whimsey Industrial Estate, Cinderford, Glos. GL14 3HZ
Tel: 01594 823115 Fax: 01594 823691



THE W.R.U. CHALLENGE TROPHY

The Welsh Rugby Union's latest brainchild began at St Helens, Swansea Saturday 1st November when Neath won 26-21. There are no changes to the laws in the Tournament apart from disallowing conversions in the hope that spectators will see more action. Stage 1 of the competition took place in November with the country's eight leading clubs playing three matches each. Pontypridd, Llanelli, Bridgend and Ebbw Vale are in Pool A with Swansea, Cardiff, Newport and Neath in Pool B. Clubs are seeded on their finishing positions in last season's league table. A draw decided which club would play two home games (Newport are unlucky again with two trips) with the results of matches being carried over into Stage 2 of the competition.

That will take place in the middle of January and mark the arrival in Wales of overseas participants, Namibia, provinces Tucuman, Rosario and Cordoba from Argentina, Spain, Rugby Canada and leading South African province, Northern Transvaal. Namibia and Tucuman will play in Pool A, Newport will entertain Spain, Rugby Canada and Rosario in Pool B whilst Cordoba and Northern Transvaal unusually have matches in both.

Fixtures have been graded which results in Wales's top three of last season Pontypridd, Swansea and Llanelli will all face Super 12 team Northern Transvaal. Only Welsh clubs can qualify for the semi-finals, to be held next March with the Final due to follow later that month. It is almost certain that some sides will not be able to field their first choice XV for internationals do clash with certain dates and hence the competition may be used by certain sides as a platform to develop lesser members of their squads.

CHALLENGE TROPHY FIXTURES

POOL A: Pontypridd, Llanelli, Bridgend, Ebbw Vale, Namibia, Tucuman.

POOL B: Swansea, Cardiff, Newport, Neath, Rugby Canada, Rosario, Spain.

POOLS A & B: Cordoba and Northern Transvaal.

STAGE 1 FIXTURES

(completed to date)

Pool A: Pontypridd 29 Llanelli 24; Bridgend 21 Ebbw Vale 7; Ebbw Vale v Pontypridd (postponed); Llanelli 57 Bridgend 19; Llanelli 27 Ebbw Vale 24; Pontypridd 12 Bridgend 7.

Pool B: Swansea 21 Neath 26; Newport 32 Neath 27; Cardiff 41 Swansea 30; Cardiff 38 Newport 15; Swansea 27 Newport 18; Neath 40 Cardiff 25.

STAGE 2 (1998)

January 9/10/11:

Pool A: Pontypridd v Namibia; Llanelli v Tucuman; Bridgend v Cordoba.

Pool B: Swansea v Rosario; Cardiff v Rugby Canada; Newport v Spain.

January 13/14:

Pool A: Pontypridd v Tucuman; Llanelli v Namibia; Ebbw Vale v Cordoba.

Pool B: Swansea v Northern Transvaal; Cardiff v Rosario; Newport v Rugby Canada; Neath v Spain.

January 16/17/18:

Pool A: Bridgend v Namibia; Ebbw Vale v Tucuman; Pontypridd v Northern Transvaal.

Pool B: Newport v Rosario; Swansea v Rugby Canada; Neath v Cordoba.

January 20/21:

Pool A: Llanelli v Northern Transvaal; Bridgend v Tucuman; Ebbw Vale v Namibia.

Pool B: Cardiff v Cordoba; Neath v Rugby Canada.

STAGE 3 (March 1998)

Semi-finals feature the top two Welsh teams from Pools A and B (results from Stage 1 and 2 to be aggregated to determine the top two teams in each pool).

March 1998: Final.

POOL A							
	P	W	D	L	F	A	Pts
1—PONTYPRIDD.....	3	2	0	0	41	31	4
2—LLANELLI.....	2	2	0	1	108	72	4
3—BRIDGEND.....	3	1	0	2	47	76	2
4—EBBW VALE.....	2	0	0	2	31	48	0

POOL B							
	P	W	D	L	F	A	Pts
1—CARDIFF.....	3	2	0	1	104	85	4
2—NEATH.....	3	2	0	1	93	78	4
3—SWANSEA.....	3	1	0	2	78	85	2
4—NEWPORT.....	3	1	0	2	65	92	2

NEWPORT RUGBY SUPPORTERS

10% Discount for members of Support

**Replica
Jerseys
£39.99**

**Sweaters
£16.00/£12.50**

**Large
Rugby Ball
£7.95**

**Ties
from £7.50**

NEWPORT

Colours: BLACK & AMBER

Shaun CONNOR	Cefnwr
David SMITH.....	Asgell Dde
Paul COOKE.....	Canolwr Dde
Matthew ROBINSON	Canolwr Chwith
Chester ROBINSON	Asgell Chwith
Alex LAWSON.....	Maswr
Nicky LLOYD	Mewnwr
Sean DUGGAN	Prop Rhydd
Gary HICKS	Bachwr
Christian JOHNSON.....	Prop Tyn
Gareth TAYLOR	Clo
Gareth ROWLANDS	Clo
Richard GOODEY (Capt.).....	Blaenasgellwr
Jan MACHACEK.....	Wythwr
Richard PARKS.....	Blaenasgellwr
Brian DAVIES.....	Eilyddion
Lee JONES.....	
Jake LOWRY.....	
Ian JONES.....	
Sven CRONK	
Vince DAVIES	

REFEREE/DYFARNWYR:
TOUCH JUDGES/LLINANWYR: 1—JEL
Newport RFC wish to thank
JAMES GILBERT



WANTED BY Newport Athletic Club
to work mainly on rugby matters
 Mr. Michael Torjesen · Newport Athletic Club

ERS CLUB SOUVENIR SHOP . . .

Porters Club and Junior Black & Ambers

SPAIN

Colours: BLUE & RED

15	Full Back	TAYEB
14	Right Wing	INCHAUSTI
13	Right Centre	SOCIAS
12	Left Centre	DIEZ F.
11	Left Wing	GARCIA
10	Stand-off	KOVALENKO
9	Scrum-half	GALLASTEGUI
1	Prop	ZAPATERO
2	Hooker	CALLE
3	Prop	JIMENEZ
4	Lock	VILLAU
5	Lock	MARTINEZ
6	Flanker	DIEZ J.
8	No. 8	GUTIERREZ (Capt.)
7	Flanker	MALET
	Replacements	MUNOZ
		ECHVERRIA
		ALONSO
		CHAMALO
		ZARZOSA
		RECODER

R: PETER BOLLAND
RRARD HAMER 2—DAVID CARTER

nk today's Ball Sponsors:
LBERT LTD

Scarves
£6.00

•
Alarm
Clocks
£6.00

•
Mugs
£2.75

•
Birthday
Cards
£1.50

Club TEMPORARY BAR STAFF . . .
atch days . . . Apply in writing to:-
o · Rodney Road · Newport · Gwent · NP9 0UU

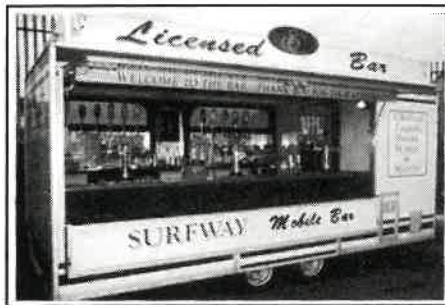


SURFWAY CATERERS LIMITED

***HIGH CLASS LICENSED CATERERS
FOR ALL OUTDOOR EVENTS***



GROUND CATERERS TO NEWPORT R.F.C.



***FOR FURTHER DETAILS CONTACT:
RON or TONI PINI
SURFWAY CATERERS LTD
WHOLESALE FRUIT CENTRE
BESSEMER ROAD · CARDIFF CF1 8BA
Tel: 01222 224885 Fax: 01222 665223
Mobile: 0860 865461***

<http://www.Newport-rfc.co.uk>

Past Encounters . . .



BRIAN PRICE

Today Newport entertain Spain and, disregarding French opposition, visits from other parts of Europe are extremely rare. However, in the 1960s Newport began two of their seasons by entertaining continental opposition. On 7th September 1963 Italian side Roma made their only visit to Rodney Parade. They undertook a four-match Tour which saw them defeated 16-14 by Harlequins at Twickenham and 12-0 by Swansea at St. Helens before travelling to Newport. The Roma side included nine full Italian internationals and were entertained on the

morning of the match by the then Mayor of Newport, Councillor Trevor Vaughan, at the Mansion House. Newport fielded a strong side, even in the absence of the retired prop, Welsh international Des Greenslade. Brian Price had been appointed the new captain, with David Watkins as his vice, and the team included eight players who were or became Welsh internationals. Wing Alan Skirving was the only debutant — the former St. Julians High School pupil had made his name as a sprinter and was now a medical student in London. As for the game itself, Newport were fortunate to escape with an 8-8 draw, thanks to a late try from wing Dennis Perrott. Centre John Uzzell had scored an earlier try which Ray Cheney had converted. The rugged visitors had scored a try of their own through wing forward Bollesan and a drop goal by outside half Martini seemed likely to give them victory until Perrott's late effort.



DENNIS PERROTT



RAY CHENEY

ROMA		NEWPORT	
F. PERRINNI	15	R. CHENEY	
G. DEL BONO	14	A. SKIRVING	
G. MARTINI	13	J. UZZELL	
A. AUTORE	12	B.J. JONES	
AMBROU	11	D. PERROTT	
R. MARTINI	10	D. WATKINS	
E. FUSCO	9	W.R. PROSSER	
U. LEVORATO (Capt.)	1	D. JONES	
AVIGO	2	G. BEVAN	
A. ANGIOLI	3	N. JOHNSON	
LAMFRANCHI	4	B. PRICE (Capt.)	
ROMAGNOLI	5	I. FORD	
R. LUISE	6	B. CRESSWELL	
A. ZITTI	8	G. DAVIDGE	
M. BOLLESAN	7	A. THOMAS	
REFEREE: Mr. GWYN WALTERS (Gowerton)			



IVOR TAYLOR

Three years later Spartak A.Z.K.G. from Czechoslovakia became the first team from behind the Iron Curtain to visit Newport. They were a vastly different proposition from Roma and were trounced 57-15 in an entertaining game.

Newport wings Peter Rees and Dennis Perrott both collected a hat-trick of tries, with Martin Webber and Ivor Taylor two each. Alan Thomas and Bob Phillips were also try scorers with full back John Anthony weighing in with 21 points.



BOB PHILLIPS

Spartak scored two good tries of their own from threequarters Tondl and Farkac and their skipper Hrnicko kicked three penalties, but they were badly out-classed by the powerful home side.



ALAN THOMAS



JOHN ANTHONY

1ST XV FIXTURES & STATISTICS

DATE	OPPONENTS	F - A	15	14	13	12	11
AUGUST							
Sat. 9	Blackheath (F)H	32- 7	C. John 1C	A. Lewis (D. Smith 1T)	S. Evans (C. Robinson)	L. Jones	M. Llewellyn
Sun. 17	Bridgend (WL)H	19-27	C. John	C. Robinson (M. Robinson)	P. Cooke	L. Jones (S. Davies)	M. Llewellyn 1T
Sat. 23	Swansea (WL).....A	14-38	D. Smith	A. Lewis 1T	P. Cooke (M. Robinson)	S. Webley	M. Llewellyn 1T
Sat. 30	Cross Keys (F)H	24-20	S. Davies 1T	D. Gregg (A. Lawson)	M. Robinson	S. Webley	M. Llewellyn 2T (S. Reed)
SEPTEMBER							
Sun. 7	Montpellier (Euro)*....H	42-17	D. Smith	M. Llewellyn	P. Cooke	M. Robinson	D. Burn
Sat. 13	Montferrand (Euro)A	32-58	D. Smith	C. Robinson 2T	M. Robinson	P. Cooke 1T	M. Llewellyn 1T
Sun. 21	Sale (Euro).....A	27-61	D. Smith 1T (C. Robinson)	D. Burn	P. Cooke (S. Reed/S. Davies)	M. Robinson 1T	M. Llewellyn 1T
Sat. 27	Montferrand (Euro)*.H	26-31	C. John	C. Robinson 1T	M. Robinson	S. Webley 1T	M. Llewellyn 1T
OCTOBER							
Sat. 4	Sale (Euro)*H	17-11	C. John	C. Robinson	M. Robinson	S. Webley (P. Cooke/A. Lawson)	M. Llewellyn 1T
Sat. 11	Montpellier (Euro)A	28-14	C. John	C. Robinson	L. Jones	M. Robinson	M. Llewellyn 1T
Sat. 18	Ebbw Vale (WL).....A	19-24	C. John	M. Robinson	M. Watkins (C. Robinson)	P. Cooke	M. Llewellyn 1T
Sat. 25	Pontypridd (WL)H	11-26	A. Lawson 1T 1P	M. Robinson	P. Cooke	M. Watkins	M. Llewellyn 1T
Tue. 28	Oakdale (BF).....A	28-20	D. Smith 1T (M. Llewellyn)	D. Gregg 2T	L. Jones	M. Watkins	S. Reed
NOVEMBER							
Sat. 15	Neath (CT)H	32-27	A. Lawson (D. Smith)	C. Robinson 2T	P. Cooke	M.J. Watkins	M. Llewellyn 1T
Tue. 18	Cardiff (CT)A	15-38	C. John	C. Robinson	P. Cooke (D. Smith)	M.J. Watkins	M. Llewellyn 1T (D. Burn)
Sat. 22	Swansea (CT)A	18-27	A. Lawson	D. Gregg	S. Webley (D. Smith)	L. Jones	C. Robinson
DECEMBER							
Sat. 6	Cardiff (WL)H	25-26	A. Lawson	C. Robinson	P. Cooke	M.J. Watkins	M. Llewellyn (D. Burn)
Sat. 13	Llanelli (WL).....H	24-32	A. Lawson	M. Robinson	P. Cooke (D. Smith 1T)	M.J. Watkins	M. Llewellyn 2T
Sat. 20	Pwllheli (WRU Cup)...H	58-16	D. Smith	M. Robinson 1T (S. Connor 1T)	L. Jones	M. Watkins	M. Llewellyn 2T
Mon. 22	Cwmbran (BF)H	67- 0	G. King 2T	D. Gregg 2T (T. Hurford)	P. Cooke (C. Robinson 1T)	L. Jones (D. Burn)	L. Faulkner 2T
Sat. 27	Neath (WL).....A	22-23	A. Lawson	M. Robinson 1T	L. Jones	M. Watkins	M. Llewellyn 1T
JANUARY							
Sat. 3	Bridgend (WL)A	POST					
Sat. 10	Spain (CT).....H						
Tue. 13	Rugby Canada (CT)..H						
Sat. 17	Rosario (CT)H						
Sat. 24	SW Police (WRU Cup)...A						
Sat. 31	Swansea (WL).....H						
FEBRUARY							
Fri. 6	Coventry (F).....H						
Sat. 14	Pontypridd (WL)A						
Sat. 28	W.R.U. CUP						
MARCH							
Fri. 6	Glasgow H (F)*H						
Sat. 14							
Sat. 21							
Sat. 28							
APRIL							
Sat. 4	London Welsh (F).....A						
Sat. 11	W.R.U. CUP (Qtr)						
Sat. 18	Ebbw Vale (WL).....H						
MAY							
Sat. 2	Cardiff (WL)A						
Sat. 9	Llanelli (WL).....A						
Sat. 16	Neath (WL).....H						
Sat. 23	W.R.U. CUP FINAL						

1 Pen Try v Montpellier(A)
1 Pen Try v Swansea(A)
1 Pen Try v Llanelli(H)
1 Pen Try v Pwllheli(H)

10	9	1	2	3	4	5	6	7	8
Connor 1C 1P (S. Davies 1T) S. Connor 1C 4P C. John 2C C. John 2C	B. Davies (D. Burn) B. Davies B. Davies D. Burn	S. Duggan R. Snow R. Snow S. Duggan	I. Jones (Capt) I. Jones (Capt) I. Jones (Capt) B. Wakefield (I. Jones)	C. Johnson (Q. Webster) C. Johnson (S. Duggan) C. Johnson C. Johnson	G. Rowlands (N. Jones) G. Rowlands (N. Jones) G. Rowlands (N. Jones) N. Jones	I. Gough 1T I. Gough I. Gough R. Goodey	R. Parks J. Machacek M. Workman M. Workman (R. Stride)	J. Machacek 1T (R. Ostler) R. Parks R. Parks R. Ostler 1T	R. Goodey (M. Workman 1T) R. Goodey (M. Workman) R. Goodey (R. Ostler) I. Gough
C. John 1T 2C 6P C. John 3C 2P C. John 2C 1P	N. Lloyd N. Lloyd N. Lloyd	R. Snow R. Snow S. Duggan	I. Jones (Capt) I. Jones (Capt) I. Jones (Capt)	C. Johnson (S. Duggan) C. Johnson (S. Duggan) R. Snow (S. Cronk) S. Cronk	G. Rowlands G. Rowlands R. Goodey (R. Ostler) G. Rowlands (R. Goodey)	R. Goodey (M. Workman) N. Jones I. Gough I. Gough	I. Gough I. Gough M. Workman 1T M. Workman (R. Ostler)	R. Ostler R. Ostler V. Davies (R. Parks) R. Parks	J. Machacek M. Workman J. Machacek 1T (C. Crane) J. Machacek
S. Connor 2C 4P (A. Lawson)	N. Lloyd (B. Davies) N. Lloyd N. Lloyd	R. Snow R. Snow R. Snow (S. Duggan) S. Duggan	I. Jones (Capt) I. Jones (Capt) I. Jones (Capt) I. Jones (Capt) (G. Hicks) G. Hicks	S. Cronk S. Cronk S. Cronk S. Cronk S. Duggan	G. Rowlands (R. Goodey) R. Goodey (G. Rowlands) G. Rowlands G. Rowlands (V. Davies) N. Jones	I. Gough I. Gough (G. Rowlands) I. Gough I. Gough M. Workman	G. Taylor 1T G. Taylor G. Taylor (R. Parks) G. Taylor R. Stride 1T	R. Parks (M. Workman) R. Parks V. Davies (R. Parks) D. Gray R. Parks	J. Machacek 1T J. Machacek 1T (M. Workman) M. Workman J. Machacek R. Ostler
S. Connor 2C 1P S. Connor 2C 3P S. Connor 1T 3P S. Connor 1P (D. Smith) C. John 2P 1C	N. Lloyd N. Lloyd N. Lloyd (D. Burn) N. Lloyd (Capt.)	R. Snow 1T S. Duggan S. Duggan	I. Jones (Capt) I. Jones (Capt) I. Jones (Capt) G. Hicks	S. Cronk R. Snow S. Cronk (Capt) (C. Johnson)	G. Rowlands (R. Goodey) R. Goodey (M. Workman 1T) G. Rowlands	I. Gough I. Gough I. Gough I. Gough M. Workman	G. Taylor 1T (R. Parks) V. Davies R. Stride (R. Parks)	D. Gray R. Parks R. Ostler	J. Machacek J. Machacek J. Machacek R. Ostler
S. Connor 2C 3C S. Connor 1T S. Connor 1C 2P	N. Lloyd N. Lloyd D. Burn	R. Snow (S. Duggan) S. Duggan S. Duggan	I. Jones (Capt) I. Jones (Capt) G. Hicks	S. Cronk R. Snow S. Cronk (Capt) (C. Johnson)	G. Rowlands (R. Goodey) R. Goodey (M. Workman 1T) G. Rowlands	I. Gough I. Gough I. Gough I. Gough M. Workman	G. Taylor 1T (R. Parks) V. Davies R. Stride (R. Parks)	D. Gray R. Parks R. Ostler	J. Machacek J. Machacek J. Machacek R. Ostler
S. Connor 1C 6P S. Connor 3C 1P A. Lawson 6C 2P S. Mitchell 1T 6C S. Connor 1T 2C 1P	N. Lloyd N. Lloyd D. Burn (B. Davies) B. Davies 1T N. Lloyd	R. Snow (S. Duggan) R. Snow (S. Duggan) S. Duggan Q. Webster (S. Duggan) R. Snow	I. Jones (Capt) I. Jones (Capt) G. Hicks B. Wakefield (G. Hicks) I. Jones (Capt)	S. Cronk R. Snow S. Cronk C. Johnson 1T S. Cronk	G. Rowlands (R. Goodey) R. Goodey (M. Workman 1T) G. Rowlands	I. Gough I. Gough I. Gough I. Gough I. Gough J. Doughton	G. Taylor 1T (R. Parks) V. Davies R. Ostler V. Davies G. Taylor	D. Gray D. Gray D. Gray (V. Davies) R. Parks 1T D. Parker D. Gray	J. Machacek 1T J. Machacek 2T J. Machacek R. Ostler J. Machacek

NEWPORT'S NEXT HOME GAME . . .

Tuesday, 13th January 1998

RUGBY CANADA

— Challenge Trophy —

kick-off 7.00 p.m.

Compiled by CAMPBELL BLACK

Down Memory Lane . . . No. 11



COLIN SMART



MIKE TEAGUE

In October 1980 Newport were busy preparing for their clash with the New Zealand Tourists, a game scheduled for the 28th of that month.

The Tourists began the Tour at Cardiff on the 18th and on the same day Newport entertained Gloucester with places against the Tourists uppermost in the players' minds. The Newport selectors were dissatisfied with the team's performances to date and made a total of nine changes for the match, with outside half Keith James being omitted with centre Justin Robinson switching positions. New centre Peter Bolland from Tredegar was given an opportunity in the centre, with Colin Smart, Rhys Morgan, Roger Powell and Steve O'Donoghue all recalled after injury. Gloucester had won six of the previous seven matches between the clubs and were expected to provide stiff opposition and included six internationals in the pack, including subsequent British Lions Steve Boyle and Mike Teague, and England's captain in lock John Orwin.



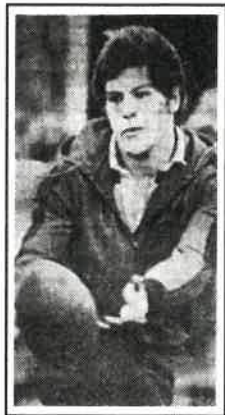
STEVE BOYLE



JOHN ORWIN

SATURDAY, 18th OCTOBER 1980: NEWPORT 38pts GLOUCESTER 6pts

Newport, aided by the return of Smart and Morgan, mounted a massive scrummage drive, a rarity in the last few weeks, and it paid off after only seven minutes. Cleanly won possession was followed by Billinghurst, Robinson, Gareth Evans and Alun Watkins all handling before Ackerman held an awkward pass and disdainfully rounded Ford to score in the corner. Three minutes later Newport went further ahead when, after Geoff Evans had made a thrust for the line, Alan Billinghurst was on hand to pick up and score. Another try followed in the 17th minute when Billinghurst went on a blindside run and Bolland drew Tunstall to send Ackerman over with Bolland converting from the touchline. Newport were now rampant and extended their lead with an astonishing try after 22 minutes. Geoff Evans swung the ball out, Ackerman ran strongly for 40 yards and then interpassed with Gareth Evans before crossing for his hat-trick; Bolland again converting. The devastating Ackerman was over yet again nine minutes later, capitalising on a brilliant break and pass by Justin Robinson. Before half time fellow wing John Churchill got himself on the scoresheet and, with Bolland converting, Newport held an astonishing 30-0 interval lead. The Ackerman phenomenon struck again four minutes into the second half, crossing after receiving a pass from hooker Steve O'Donoghue, and midway through the half Ackerman scored again to equal the Newport try scoring record. Hopes were high that Ackerman would break the same, but the loss of Gareth Evans with a hamstring injury disrupted Newport's play. The only remaining score was a consolation effort by Gloucester full back Paul Ford, who charged down Robinson's kick for a try which he converted. Ten days later Newport faced New Zealand and lost only 14-3 — and that without 19-year-old Robert Ackerman who, because of his exploits in this match, had been selected by Wales to make his debut the following Saturday against the All Blacks, and hence was rendered ineligible for his club's game against the Tourists.



ROBERT ACKERMAN



ALUN WATKINS



PETER BOLLAND



JUSTIN ROBINSON



PAUL FORD

GLOUCESTER

P. FORD	15
P. TUNSTALL	14
David POINTON	13
S. PARSLÖE	12
Penraig CONWAY	11
Colin PRYCE	10
S. BAKER	9
M. PREEDY	1
Steve MILLS	2
Alan BROOKES	3
Steve BOYLE	4
J. ORWIN	5
V. WOOLLEY	6
Mike TEAGUE	8
J. WATKINS	7

NEWPORT

Alun WATKINS	
Robert ACKERMAN	
Gareth EVANS	
Peter BOLLAND	
John CHURCHILL	
Justin ROBINSON	
Alan BILLINGHURST	
Colin SMART	
Steve O'DONOGHUE	
Rhys MORGAN	
Gareth FYNN	
David WATERS	
Geoff EVANS (Capt.)	
Keri WILLIAMS	
Roger POWELL	

REFEREE: Mr D.O. HUGHES (Newbridge)

Wildings

Est.1874

**OFFICIAL SUPPLIERS OF MENSWEAR
TO
NEWPORT R.F.C.**

**HIREWEAR! BEST VALUE IN NEWPORT
for WEDDING and EVENING WEAR
and all supplied from our own stock**

TEL: 01633 262861



R.J. MASON TRANSPORT

ARTICS

RIGIDS

**HIABS — CRANE VEHICLES
ABNORMAL LOADS**



*Daily or Contract Rates
Large or Small Consignments
Nationwide & Continental*

**NEWPORT (GWENT)
01633 213525
Victoria Wharf
Newport · NP9 2BS**

COMPETITIVE RATES

<http://www.Newport-rfc.co.uk>

IG LIMITED

STRONG

ON SUPPORT

Whether it's safe and secure support
for masonry over openings,
or practical help for Welsh Rugby,
IG will always be there -
investing today for a better tomorrow.

**IG LIMITED, AVONDALE ROAD,
CWMBRAN, GWENT NP44 1XY
TEL: 01633 866811. FAX: 01633 876222**



Better by design

<http://www.Newport-rfc.co.uk>

Caring for your financial needs...

- ***Friendly personal service***

- ***Competitive savings & investments***

- ***A fast flexible service with prompt decisions on mortgage enquiries***

For more details call our enquiry desk on 01633 840454, or call into your local branch.

*The Local Independent
Building Society Providing Independent Financial Advice*

**MONMOUTHSHIRE
BUILDING SOCIETY**
Established 1869



Member of the Building Societies Association

LOCAL BRANCH OFFICES:

145 Chepstow
Road, Maindee
Tel: 01633 254891

234 Stow Hill,
Handpost
Tel: 01633 213276

HEAD OFFICE:

John Frost Square,
Newport, NP9 1PX
Tel: 01633 840454

Loans available to persons aged 18 or over. Subject to status and valuation of the property. Security over the property and, in appropriate cases, a suitable life endowment policy required. A high percentage loan fee may be payable. Written quotations available on request from our Head Office. Independent Financial Advice is offered through our subsidiary company Monmouthshire Independent Financial Advisers Ltd (MIFA). MIFA is a member of The Burns-Anderson Independent Network PLC for Life, Pensions and Investment Business only. Regulated by the Personal Investment Authority. The PIA does not regulate mortgage or building society accounts.

YOUR HOME IS AT RISK IF YOU DO NOT KEEP UP REPAYMENTS ON A MORTGAGE OR OTHER LOAN SECURED ON IT.

<http://www.Newport-rfc.co.uk>



PRECISION-CAST COMPONENTS LTD.

Precision Sand Castings in Aluminium Alloys

USKWAY
NEWPORT · GWENT · NP9 2JY

Tel: (01633) 214565

Fax: (01633) 216204

Sponsor of Newport R.F.C. Under 17s Team

P & G BLAND

**INSURANCE BROKERS TO
NEWPORT ATHLETIC CLUB**

For a no obligation quote call:

01222 487761

Commercial · Motor · Household · Financial Services

P & G BLAND (Wales) LTD
Empire House, Mount Stuart Square,
Cardiff CF1 6QY

<http://www.Newport-rfc.co.uk>

**Whatever
the
challenges
facing
your
business
you don't
have to
face them
alone!**

If you're looking for:

Financial Assistance

Start-up Support

**Staff Recruitment &
Training**

**Strategic Business
Advice**

Property & Sites

Marketing Advice

Or

Tourism Sector Advice • Local
Suppliers/Services
Export Assistance • Development
of 'Co-operative' Business
Technical/Innovation Assistance •
'Support for Young Enterprise'

Look no further!

For information or guidance
on any of these issues contact:



Cyswllt Busnes Gwent

0 3 4 5 9 6 9 7 9 8

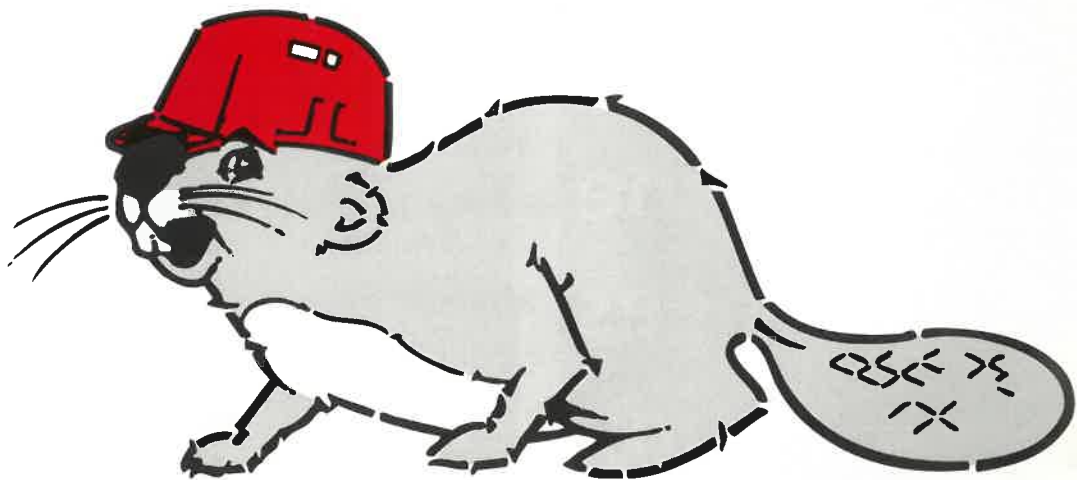
Business Connect Gwent

Newport & Gwent Enterprise
Enterprise Way
Newport
South Wales NP9 2AQ

LAD/04



Newport
COUNTY BOROUGH
BWRDEISTREF SIRODL
Casnewydd



ROBERT PRICE
THE BUILDERS' MERCHANTS

NEXT DOOR

BUILDING MATERIAL SUPPLIERS TO EVERYONE
TRADE AND RETAIL WELCOME

RODNEY ROAD, NEWPORT
01633 267111

BRANCHES THROUGHOUT SOUTH WALES